

# Welcome To.....



## Torky supplies office

CATEGORY OF PRODUCTS		
 الأمن التنفسي	 ملابس الحماية	 تدريب
 Communication Products	 Foot & Leg	 Ergonomics
 ادوات	 غرف نظيفة	 ادوات طبية و اسعافات اولية
 Eye & Face	 Fall Protection & Confined Space	 Signs & Traffic
 حفاظ سمعي	 حمل المواد	 تخزين و حمل
 Head Protection	 Lights & Warning	 Spill Control
 حماية الأيدي	 Safety Showers & Eyewashes	 حماية من الحرائق



Affordable Safety Worldwide





# *Torky supplies office Present Wide Range of:*

1- Personal Protective Equipment ((PPE))

2- Measurement Devices

3- Road Safety Equipment

4-Fire Fighting



# **1- Personal Protective Equipments ((PPE))**

# 1- Personal Protective Equipments ((PPE))



**Head Protection**

**Eye & Face Protection**

**Hearing Protection**

**Respiratory Protection**

**Hand Protection**

**Falling Protection**

**Clothing Protection**

**Footwear Protection**

# HEAD PROTECTION



Head protection is required in almost every industry where there is a risk of being injured by falling object or when working in areas of restricted space.

*Torky Supplies Office* can help you to choose the correct protection for your head which will make you work in unrivalled levels of protection and comfort.

# HELMETS



**Head Master Helmet**

- Polycarbonate harness.
- 4 points Suspension harness.
- International slot to accept accessories.
- **Conform to EN 397**



**Mark III JSP Helmet**

- Wheel Ratchet Adjustment System.
- 6 points suspension Textile harness.
- Long Peak.
- Nylon sweatband.
- 440V Electrical isolation
- **Conform to EN 397; ANSI Z89**





## Mark VII Helmet



### Mark VII R Features

Mark VII  
Terylene Webbing Harness



Ventilation



Rear shot of Easyjust®  
Adjustment System with  
pencil holder



Featuring the SureSlide®  
Retractable Spec deployed



- Long peak.
- Vented
- Sure slide visor
- 6 points suspension Textile harness.
- Nylon sweatband.
- Wheel ratchet
- **Conform to EN397**

# HELMET'S Accessories



**Head Lamp**

- Fully Adjustable Harness
- Ratchet enables adjustment of light beam.



- Face Shield for Head Master Helmet.
- Conform to EN 166





# HELMET'S Accessories



- Ear Defender For Helmet Mark VII
- & Head Master Helmet



- Ear Defender For Helmet Mark III.
- Assumed protection over the head : 27SNR
- Conform with EN 352-3

# EYE & FACE PROTECTION



*Protection of the face and eyes is mandatory.....*

*You must provide your employee and your worker with the most suitable protection equipment that protect him self from potential risk and keep him safe with any impact hazards.*

*With **TSO** you have wide range of Eye and face protection that offer very high leading protection solution..*

# Working Glasses



- Modern Styling,
- Ultra light weight 26 Gm
- Clear & Smoke
- Conforms to EN166.1.F



- Fashion Glasses..
- Ultra light weight 26 Gm
- Clear & Smoke
- Comfortable with soft nose bridge
- Conforms to EN166.1.F



# Working Glasses



**Alpine**

- Ideal to be used Over spectacle.
- Cord attachment point.
- Conforms to EN166.1.F



**Pacific Goggle**

- Ideal to be used Over spectacle
- Cord attachment point.
- Conforms to EN166.1.F

# Working Glasses



**HM215**

- Black frame.
- Adjustable arm size.
- Clear or smoke lens
- Conform to EN166 & ANSI Z87.1



# Safety Goggles



- Direct Ventilation & Adjustable elastic headband.
- Clear Soft PVC frame
- Anti Dust & impact
- Conforms to EN166 , ANSI Z87.1 & CSA Z94.1



- Wide soft PVC body.
- Indirect ventilation ports.
- Conforms to EN 166, & CSA Z94.1



**Welding Goggle**

# Face Shields



- Polycarbonate face shield
- Visor brow guard and chin guard
- Complete with adjustable wheel.
- Conforms to EN166.1.B.3.9



# Face Shield



- Face Shield W/Clear Visor Aluminum Bound
- Conform To EN166.



- Slot Cap Welding Helmet.
- Liftable lens.
- Conforms to Ansi Z87.1



# Eye & Face Accessories



**Eye Wash Wall Station**

- A wall mounted mirror dispenser holding two 500ml bottles



**Sterile eye Wash solution**

- Emergency Eye Wash Solution Sodium Chloride 0.9 w/v (normal Saline)
- Conforms to H.S.E regulations.



# EAR PROTECTION

*Exposure to noise can be permanently damaging.*



*Torky supplies office can solve the problem of hazards noise pollution by offering protection in the working environment.*

# Ear Muffs



**Monza**

- SNR=32.
- Conforms to EN 352-1



**Big Range-Blue**

- Flexible strap to allow behind the head fitting of head band.
- Over the Head SNR=30
- Behind the Head SNR=26
- Conforms to EN 352-1

*N.B: SNR= Simplified Noise Level Reduction*

# Ear Muffs



**Ear Muff**

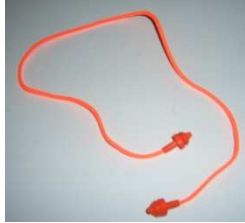
**SNR: 25DB**  
**Conform to EN352-1, ANSI S3.19**



**Folded Ear Muff**

**SNR: 30DB**  
**Conform to EN352-1, ANSI S3.19**

# *Ear Plug*



**Mega Plug**



- **Manufactured from Silicon rubber.**
- **SNR=24**
- **Conforms to EN 352-2**



**PU Foam**

- **SNR=37.**
- **Conforms to EN 352-2**

# *Ear Plug*



- Corded earplug in polybox.
- Manufactured from soft rubber.
- SNR=25
- Conforms to EN 352-2



- Made of soft polyurethane foam.
- SNR=27
- Conforms to EN 352-3



# Respiratory Protection



*Torky supplies office has wide range of respiratory products,*

# Respirators



**Twin midi mask**

- **Manufactured from Thermoplastic rubber.**
- **Twin Midi Mask**



# Respirators



**Single maxi mask**

- Four points cradle suspension
- Silicon single mask



**Twin maxi mask**

- Four points cradles suspension
- Silicon Twin maxi mask

## *Cartridges*

<b>ITEM</b>	<b>Description</b>
<b>A1</b>	<ul style="list-style-type: none"><li>•Filter of organic Vapors &amp; gases.</li><li>•Conforms to EN 141.</li></ul>
<b>A2</b>	<ul style="list-style-type: none"><li>•Organic gases.</li></ul>
<b>AB1</b>	<ul style="list-style-type: none"><li>•Organic &amp; Inorganic gases.</li></ul>
<b>B1</b>	<ul style="list-style-type: none"><li>•Filter of Inorganic &amp; gases.</li></ul>
<b>E1</b>	Filter of Acidic vapors & Gases.
<b>K1</b>	<ul style="list-style-type: none"><li>•Filter of Ammonia gases</li></ul>
<b>ABEK1</b>	Filter of Combination of above gases.
<b>P2</b>	<ul style="list-style-type: none"><li>•Dust Filter medium efficiency.</li><li>•Conforms to EN 143</li></ul>
<b>P3</b>	Dust Filter high efficiency.

## *Full Face Mask*



- Well balanced silicon full face .
- Polycarbonate visor
- 5 Points Suspension Harness
- Conforms to EN 136

**Olympus Full Face**

## *Full Face mask Cartridges*

<b>ITEM</b>	<b>Description</b>
<b>A2</b>	<ul style="list-style-type: none"><li>• Organic gases with boiling 65° and above.</li><li>• Conforms to EN 141.</li></ul>
<b>B2</b>	<ul style="list-style-type: none"><li>• Inorganic Vapors &amp; gases.</li></ul>
<b>AB2</b>	<ul style="list-style-type: none"><li>• Organic &amp; inorganic filters.</li></ul>
<b>K2</b>	<ul style="list-style-type: none"><li>• Ammonia &amp; ammonia derivatives gases.</li></ul>
<b>A2P3</b>	<ul style="list-style-type: none"><li>• Organic gases + Dust filter High efficiency</li></ul>
<b>ABEK2</b>	<ul style="list-style-type: none"><li>• Filter of Organic + Inorganic + Acidic gases &amp; Ammonia.</li></ul>
<b>ABEK2P3</b>	<ul style="list-style-type: none"><li>• Combination of gas &amp; Dust filters</li><li>• Conforms to EN 141, EN143.</li></ul>
<b>P3</b>	<ul style="list-style-type: none"><li>• Dust Filter High Efficiency.</li><li>• Conforms to EN143.</li></ul>

# ***Disposable Facial Masks***



- Reusable dust mask.
- Fully adjustable head harness to allow perfect fit.
- Conforms to EN1827.



**Tradesman Mask**



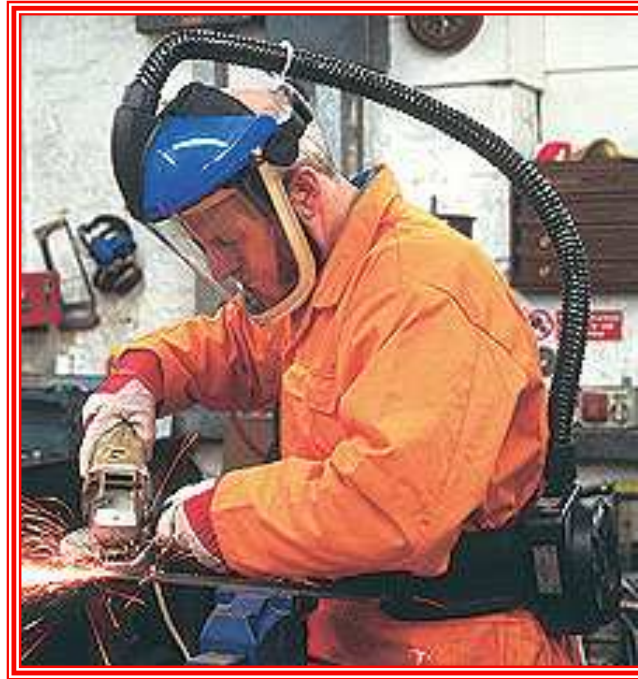
# *Respirators*



•Dust/Chemical Respirator with Single/Dual cartridge and dual breather valve design.



# JET STREAM



*JSP Jet stream is designed to provide a new more affordable powered air alternative to conventional negative pressure respirators.*

# *Hand Protection- Gloves*

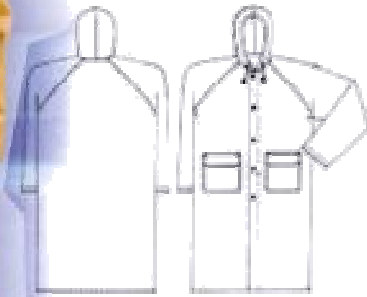




# Protective Clothing



**R-120**  
**RAINCOAT**  
0.32mm PVC/Polyester/  
PVC long raincoat.



## *Falling Protection*



- Fully adjustable
- Front and Rear attachment
- Conforms to EN361 and EN358

**Pioneer Full Body Harness**



- Work Positioning Lanyard
- 14mm diameter polyamide 3-strand rope.
- Conforms to EN358 and EN362

**Vertex 8145**

## SPELENIUM ROPE



### RECOMMENDATION!

Before first use, soak the rope, then leave to dry slowly. It will shrink by around 5% and reduce the risk of sheath slippage.

PERFORMANCES	SPELENIUM				ANTIPODES
	9 mm	Gold 9,5 mm	10 mm	10,5 mm	8 mm
TYPE OF ROPE	EN 1891 B	EN 1891 B	EN 1891 A	EN 1891 A	EN 564 L
BREAKING LOAD	1900 kg	1800 kg	2500 kg	2800 kg	1800 kg
BREAKING LOAD WITH FIG-8 KNOT	1350 kg	1250 kg	1800 kg	2000 kg	-
NUMBER OF Factor 1 falls	8/80 kg	5/80 kg	6/100 kg	15/100kg	2/80 kg
IMPACT FORCE Factor 0,3	4 kN	4,6 kN	5 kN	5 kN	4 kN
ELONGATION 50/150 kg	3,6%	2%	4,1%	3,7%	6,2%
SHEATH SLIPPING	0,3%	0,4%	0%	0%	0%
WEIGHT PER METRE	51 g	55 g	61 g	67 g	41 g
SHEATH PERCENTAGE	43%	40%	41%	38%	41%
CORE PERCENTAGE	57%	60%	59%	62%	59%
SHRINKAGE	4%	4%	3%	3,3%	4%
MATERIAL	Polyamide	Polyamide	Polyamide	Polyamide	Polyamide

# Protective Footwear



**COFRA**<sup>®</sup>  
BORN TO WORK



**COFRA**<sup>®</sup>  
BORN TO WORK

# Protective Footwear



**UltraFit**  
Safety Shoes



## 2- Measurement Devices

*Gas Detectors*  
*Single Gas Detector*  
*Portable Devices*



Sensors: H<sub>2</sub>S, CO, O<sub>2</sub>, SO<sub>2</sub>, PH<sub>3</sub>, CO<sub>2</sub>,  
NH<sub>3</sub>, NO<sub>2</sub>, HCN, O<sub>3</sub>, NO

# *Multi Gas Detector-Portable Devices*



[H<sub>2</sub>S, CO, O<sub>2</sub> and %LEL]





## 3- ROAD SAFETY EQUIPMENT



# Road Safety Equipment



## Speed Restrictors

- Highly effective in controlling the movements of vehicles where excess speed could be dangerous
- Designed for permanent or temporary siting to restrict speed at restricted bends, blind spots and exits
- Heavy duty sturdy design
- The 15cm (length) speed restrictor is manufactured with a 15cm channel in the base for channelling tyres and allows safely non heavy traffic across base construction site access roads. While the 25cm (length) is manufactured with a 25cm channel in the base.
- Permanent or temporary use (temp) which are highly visible and cost effective
- Slow-down range is manufactured from Virgin PVC

- Suitable for:
- Ports
  - Building/industrial estates
  - Construction sites
  - Temporary construction sites

## SLO-DOWN RANGE

From Signs & Plastic Products Ltd

25cm End Cap

15cm End Cap



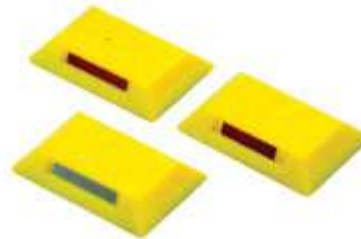
15cm (length)

25cm (length)



15cm Slotted Speed Restrictor

25cm Slotted Speed Restrictor



# Road Safety Equipment



# Safety Signs





## 4- Fire Fighting

# Fire Fighting





## *Torky supplies office*

**TSO** is committed to delivering high quality products and services, on time, by meeting international standards and deliver at highly competitive prices.

**We are fully committed to meet, and regularly exceed customer expectations, thus assertively increasing our market share and value.**



# Contact US

**"Head Quarter" Cairo**

**Address:** Cairo , Egypt ,

**Tel.,** 02 22523821

**Fax.,** 02 22523821

**Mobile.,** +2 010 73 16 272

**E- mail:-** [torkysupplies@yahoo.com](mailto:torkysupplies@yahoo.com)

